

Matéflex Sports Tiles

Homecourt

Matefléx II

Matefléx III

Pro Gym

Pro Gym Planks

Softflex

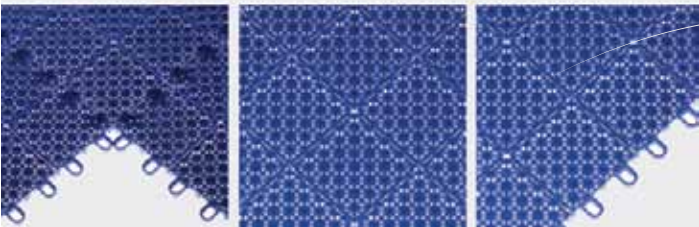
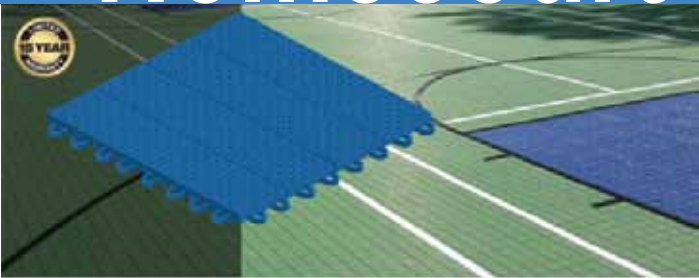


NT SPORTS
G R O U P

800-462-7766

www.ntsportsgroup.com

Homecourt



HomeCourt® is the ultimate flooring option for a year-round backyard court for sports. As the original modular flooring manufacturers, we have over 40 years of experience making interlocking floor tiles, and that experience shows in the quality and durability of our product. Whether you're looking to build a backyard basketball court or a home tennis court, HomeCourt® is an affordable high-quality solution.



NT SPORTS
G R O U P

HomeCourt® has narrow gauge ribs for excellent traction, and the low-abrasion surface reduces wear and tear on sports equipment and shoes. The tiles' expansion joints are designed so the tiles can be trimmed tightly to your fence or border to give your court a professional, finished look.

Best of all, your new home court will be colorful, attractive, and versatile. With 16 standard colors to choose from, any look is possible. And you can personalize it with custom logos and designs painted directly onto your HomeCourt® tiles.

Specifications ■■■

Size: 12" x 12" x 1/2"

Weight: 0.875 lbs

Material: High Impact Polypropylene

Expansion Joint: 6 Expansion Joints evenly divided into 2 groups running perpendicular to each other

Locks: 32 Latch Locks: 2 sides with 8 Female Parts Each and 2 Sides with 8 Male Parts Each.

Support: 400 heavy duty cylindrical legs support upper grid

Static Loading: 250 psi

Fungus and mildew resistant

Colors



Applications ■■■

- Tennis
- Soccer
- Volleyball
- Paddle Tennis
- Badminton
- Soccer
- Pickleball
- Inline Hockey
- Shuffleboard
- Basketball



800-462-7766

www.ntsportsgroup.com

Matefléx II



Matefléx II interlocking tennis court tile features a narrow-gauge rib system for quick drainage, high traction, and good ball bite (less skid), which is ideal for pickleball court and tennis court resurfacing. This is comparable to using a narrow-gauge racquet string. Even after many years of wear and tear, these ribs will maintain the same width and therefore the same playing speed.



NT SPORTS
G R O U P

Each Matéflex II tile has 32 individual interlocks and surrounding modules for superior court integrity. This interlocking tile is firm for a stable playing platform and is also reinforced for exceptional strength and court longevity, which is necessary for any pickleball or tennis court design and makes for ideal pickleball and tennis court material.

Matéflex II incorporates a leaf spring type flex joint system. This has three important advantages; provides controlled lateral give during play to reduce muscle stress and enhance player comfort, conforms to minor undulations in the substrate, and controls thermal expansion. Matéflex II is formulated as a special high-impact polypropylene copolymer and its state-of-the-art stabilizers insure that the product will last under any climate or weather condition

Specifications ■■■

Size: Size: 12" x 12" x 5/8"

Weight: .75 lbs./sq. ft.

Material: High-Impact Polypropylene

Expansion Joint: 6 Expansion Joints divided evenly into 2 groups Running Perpendicular to each other

Locks: 32 Latch Locks: 2 Sides with 8 Female Parts Each and 2 Sides with 8 Male Parts Each

Support: 481 Gusseted Legs Support Upper Grid

Static Loading: 16,000 lbs./sq. ft.

Fungus and Mildew Resistant

Applications ■■■

- Tennis
- Pickleball
- Ball Hockey
- Basketball
- Shuffleboard Courts
- Backyard Courts



Colors



800-462-7766

www.ntsportsgroup.com

Matéflex III



Matéflex III tile features a high-density rib pattern for tremendous durability under the most demanding conditions. That's what makes this modular surface a safe bet for a variety of court applications including an outdoor volleyball court, outdoor basketball surface, and outdoor inline hockey.



NT SPORTS
G R O U P

Matéflex III tile incorporates a leaf spring type flex joint system. This has three important advantages.

- Provides controlled lateral give during play for reduced leg stress and greater comfort to the player.
- Conforms to minor undulations in the substrate
- Controls thermal expansion.

Matéflex III is made from a special high-impact polypropylene copolymer and is fully color impregnated. State-of-the-art stabilizers insure the product will last under any climate.

Specifications ■■■

Size: 12" x 12" x 1/2"

Weight: .73 lbs./sq.ft.

Material: High Impact Polypropylene

Expansion Joint: 6 Expansion Joints evenly divided into 2 groups running perpendicular to each other

Locks: 32 Latch Locks: 2 sides with 8 Female Parts Each and 2 Sides with 8 Male Parts Each.

Support: 481 Gusseted Legs Support Upper Grid

Static Loading: 16,000 lbs./sq. ft

Fungus and mildew resistant

Applications ■■■

- Outdoor Inline Hockey
- Outdoor Volleyball
- Outdoor Basketball
- Entrance ways
- Patios
- Pool Areas



Colors



800-462-7766

www.ntsportsgroup.com

Pro Gym



ProGym is our premier multi-purpose gym flooring product. ProGym satisfy the needs of everyone, even the most demanding professionals. That resulted in excellent fitness flooring with traction and the comfort of superior resiliency. And that's not all, this tile is affordable and, with our redesigned interlocking system, easier to install.



NT SPORTS
G R O U P

Like all of our products, ProGym's gym floor tiles are portable, very low maintenance, and durable. It is available in all of our standard colors, as well as custom colors, and complements your multi purpose gym flooring needs. te-of-the-art stabilizers insure the product will last under any climate.

Specifications ■■■

Size: 12" x 12" x 1/2"

Surface: Smooth and Solid

Support: Geometric Ribs

Locking: 5 Positive Interlocks Per Side

Colors: All Standard & Custom Matéflex Colors

Material: High-impact Polypropylene

Weight: 0.80 lbs

Static Loading: 18,000 lbs./sq. ft.; 125 psi

Applications ■■■

- Basketball
- Volleyball
- Gymnasiums
- Recreation Rooms
- Multi-Use facilities
- Inline/Ball Hockey
- Aerobics
- Indoor Field Hockey



Colors ■■■



800-462-7766

www.ntsportsgroup.com

Pro Gym Planks



Pro Gym PLanks takes modular athletic flooring to the next level in beauty and functionality. ProGym Plank is the first solid-top tile that marries quality floor finishes with the versatility and durability of a raised modular floor in a plank form. ProGym Plank has a unique construction that allows for airflow and keeps the surface away from potential dampness. Each tile is a single, snap-together unit for easy installation. Best of all, you can quickly and easily install vinyl flooring where other products can't go.



NT SPORTS
G R O U P

ProGym Plank is ideal for gyms, aerobics, basketball courts and many other sport flooring solutions.

Specifications ■■■

Size: 4.15" x 36.15" x 1/2"

Weight: 1.6 lbs./sq. ft.

Material: Luxury Vinyl Tile in a high impact Polypropylene Base

Extra Heavy Duty Wear Layer

Support: Surface Supported by 196 Truncated Conical Legs & Gusseted Posts

Locks: 28 Latch Locks

Packing: 24 tiles per carton

■■■ Colors

Maple



Applications ■■■

- Basketball Courts
- Gymnasiums
- Aerobic & Exercise Flooring
- Any other permanent, temporary or portable use



800-462-7766

www.ntsportsgroup.com



NT SPORTS

G R O U P

www.ntsportsgroup.com

800-462-7766